

WELBEE INVERTER A350P AC/DC



DEEP PENETRATION OF THE WELD
WITHOUT PREHEATING

LOW ELECTRODE WEAR EVEN WHEN
WELDING AT HIGH CURRENTS

HIGHER LINE SPEED WITH FEWER
ELECTRODE CHANGES

30 DAYS

FREE OF CHARGE
TESTING

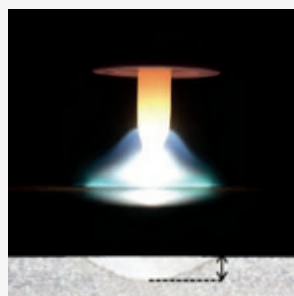
WARRANTY

3

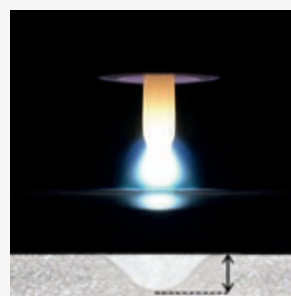
YEARS

to the power source

HIGH EFFICIENCY ALUMINIUM WELDING



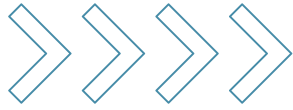
70 Hz



500 Hz

Improved AC frequency of 500Hz to achieve high arc concentration

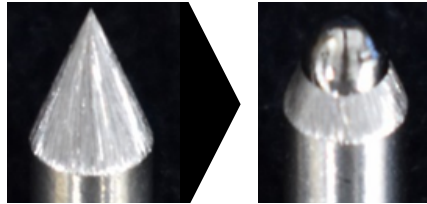
WELBEE INVERTER A350P AC/DC



HIGH INTERMITTENCY FOR WORRY-FREE WELDING ALL DAY LONG

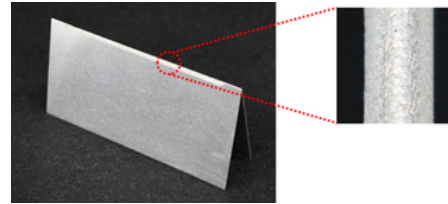
ELECTRODE DESIGN FUNCTION

Take full advantage of the even depth of the barrier.

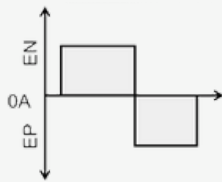


WELDING OF THIN SHEETS

The output AC current range is from 5 A to 350 A, which enables high-efficiency welding of aluminium from ultra-thin plates to medium-thick plates.

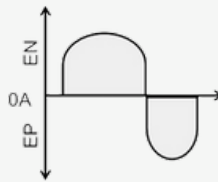


OPTION TO CHOOSE A CURVE TO SUIT THE APPLICATION YOU ARE WELDING



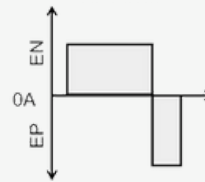
STANDARD MODE

the possibility of welding from thin to thick sheets



SOFT MODE

low arc sound, wider arc, suitable for butt welds



HARD MODE

concentrated arc for fillet welds, less electrode wear

| Specification / model | Welbee Inverter A350P | | | |
|---|--|-----------------|-----------------|-----------------|
| | AC TIG welding | DC TIG welding | AC electrode | DC electrode |
| Nominal connection voltage | 3-400V | | | |
| Allowable voltage deviation | 400 V ±15% | | | |
| Connection power | 12.7kVA, 11.1kW | 12.2kVA, 10.8kW | 16.3kVA, 14.6kW | 16.1kVA, 14.5kW |
| Rated primary current | 18.5A | 19.0A | 24.0A | 24.5A |
| Rated output current | 350A | 350A | 350A | 350A |
| Rated output voltage | 24V | 24V | 34V | 34V |
| Welding current area | 5 to 350A | 2 to 350A | 10 to 350A | |
| No-load voltage max. | 74V | | | |
| Intermittent | 60% | | 30% | |
| Number of JOBs | 100 | | | |
| Temperature of the working environment | -10 to 40°C | | | |
| Dimensions (WxDxH) | 395 mm x 710 mm x 592 mm (without eye bolts) | | | |
| Weight (kg) | 68 kg | | | |
| Efficiency | 81.3% | | | |
| Ignition mode | HF | | | |
| Rated maximum voltage (for high frequency ignition) | 11.1kV | | | |
| USB | Easy transfer of welding parameters through the USB port | | | |